

# Community Impact Grant Application Webinar 2024-2025 Cycle

May 1<sup>st</sup>, 2024 – 1pm-2pm

May 8<sup>th</sup>, 2024 – 9am-10am

\*We will post these slides on our website here:

<https://willamettehealthcouncil.org/funding-opportunities/grants/>



# Introductions & Contact Information

## Willamette Health Council Team

Josie Silverman-Méndez (she/her)

Deputy Director

[jsilverman@willamettehealthcouncil.org](mailto:jsilverman@willamettehealthcouncil.org)

Molly Duddleston (she/her)

Community Investments Coordinator

[mduddleston@willamettehealthcouncil.org](mailto:mduddleston@willamettehealthcouncil.org)

## PacificSource Team

Zaira Flores Marin (she/her)

Director, Marion-Polk CCO

[zaira.floresmarin@pacificsource.com](mailto:zaira.floresmarin@pacificsource.com)

Skye Hibbard-Swanson (she/her)

Community Health Coordinator, Marion-  
Polk CCO

[skye.hibbard-swanson@pacificsource.com](mailto:skye.hibbard-swanson@pacificsource.com)

# About the Willamette Health Council

The Willamette Health Council (WHC) is a local nonprofit organization that serves as the community governance body for the Marion-Polk Coordinated Care Organization (CCO) run by PacificSource.

Through this partnership, we work with PacificSource to jointly manage the Marion-Polk CCO and are responsible for much of the community-facing work.



## **Our Mission:**

We improve the health of the Marion-Polk community by governing our CCO, investing in our communities, and fostering collaborative relationships.



## **Our Vision:**

We envision optimal health and wellbeing for our community members.



## **Our Values:**

We work in service to Oregon Health Plan members and the communities of Marion County & Polk County. We are: Transparent, Collaborative, Equitable, Accountable, Adaptable, & Strategic.

# MARION & POLK COUNTY COORDINATED CARE ORGANIZATION

(Marion-Polk CCO) Joint Management Structure



CCO Contract

## OREGON HEALTH AUTHORITY

Joint Management Agreement

 **WHC GOVERNING BOARD**

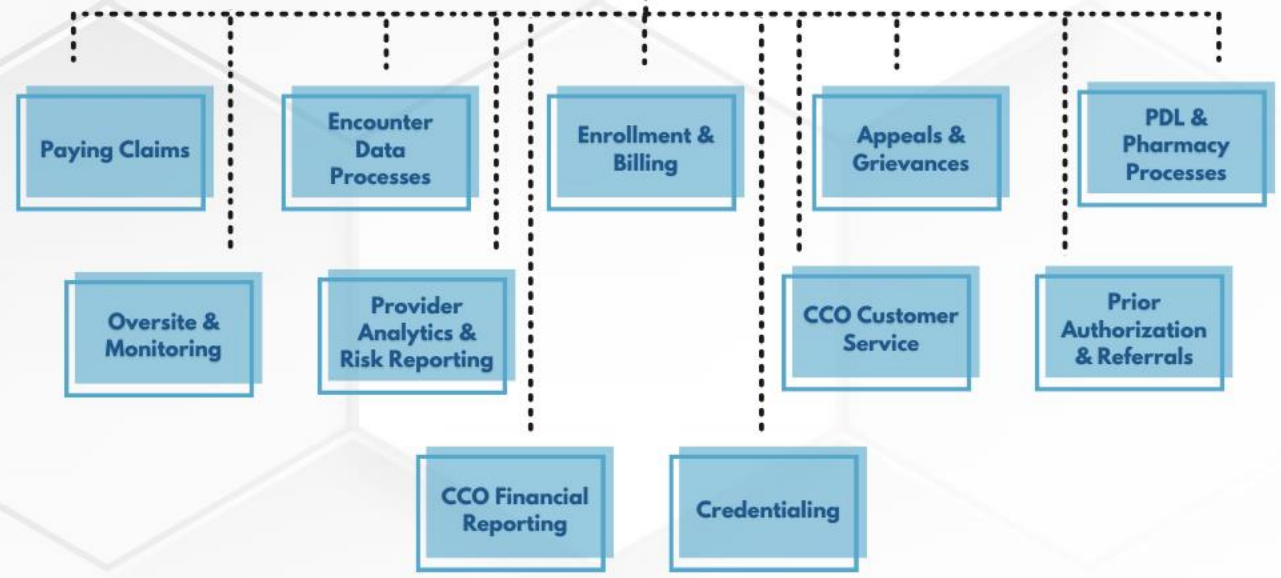
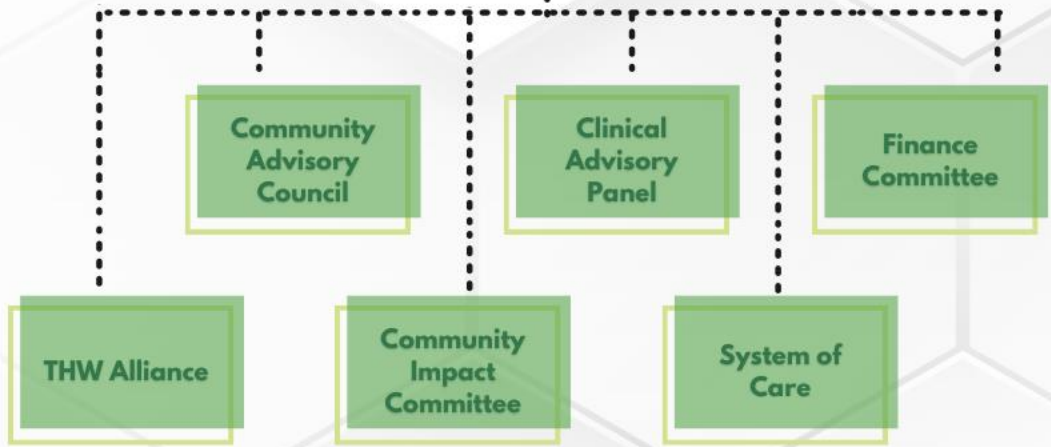
**Core Responsibilities:**

- CCO community governance
- Community Investments
- Community Health Assessment & Community Health Improvement Plan

 **PacificSource**  
Community Solutions

**Core Responsibilities:**

- Holds & manages CCO contract w/ the Oregon Health Authority
- Oregon Health Plan benefit administration & health plan operations



# About our Community Impact Grant Program

- We have braided three WHC-PacificSource community funding streams to create a low barrier, streamlined application experience:
  - [Community Benefit Initiative](#) (administered by WHC)
  - [SHARE Initiative](#) (administered by PacificSource)
  - Community Impact Fund (administered by WHC)
- As the applicant, you do not need to understand the various fund requirements. We review your application and determine which fund it best aligns with, if any.
- Before applying, please take time to understand the Project Eligibility and Priority Criteria (see slides #7-8).

# About our Community Impact Grant Program

*Community-driven, community-responsive.*

- **Community Advisory Council (CAC):**
  - WHC committee that advises the WHC & PacificSource on how best to serve people on the Oregon Health Plan (OHP).
  - Made up of OHP members/those who are parents/guardians of people on OHP and other community stakeholders.
  - Develops and oversees the Community Impact Grant Program with a focus on grants awarded through Community Benefit Initiative and SHARE Initiative.
- **Community Impact Committee (CIC):**
  - WHC committee that oversees investment of our Community Impact Fund and related policy work.
  - Made up of WHC Board members, committee members, and other community stakeholders.
  - In tandem with the CAC, the CIC develops and oversees the Community Impact Grant Program with a focus on grants awarded through the WHC's Community Impact Fund.

# Project Eligibility

- Project must address at least one of the three **Impact Areas**:
  - Behavioral Health (including mental health & substance use disorder)
  - Children, Youth, & Families
  - Housing & Homelessness
- Project must directly impact the Marion-Polk community.
- Project must support the WHC's mission.
- Maximum award amount: **\$100,000**
- Funds will be awarded in late 2024 for projects happening/starting in 2025.

# Priority Criteria

## Projects that demonstrate the following will be prioritized for funding:

- Aligns with more than one Impact Area
  - Be sure to describe **how** your project connects to more than one Impact Area.
- Equity-driven
  - Be sure to describe **how** your project addresses barriers to health equity and improves conditions so that all Marion-Polk residents can reach their full health potential.
- Cultural & Linguistic Responsiveness
  - Be sure to describe **how** your project engages and/or serves diverse populations ensuring their cultural and linguistic needs are met.
- Supports one or more Marion-Polk Community Health Improvement Plan (CHIP) priority areas and specific aims
  - Review the CHIP priority areas and specific aims to be able to explain **how** your project connects.
  - Find the 2021-2025 CHIP and supporting documents on our website here:  
<https://willamettehealthcouncil.org/community-health/community-health-improvement-plan/>

*In addition, projects that have not received grant funding from WHC and/or PacificSource in the past will be prioritized for funding.*



# How To Apply

To apply for a Community Impact Grant, you will use Foundant, our online grants management system.

- Create a Foundant account at: <https://www.grantinterface.com/Home/Logon?urlkey=willamette>
- If you have applied for a WHC grant, donation, and/or sponsorship in the past, please use your organization's pre-existing Foundant account.
- *Starting May 13<sup>th</sup>*, please reference grant application support documents on the WHC website (<https://willamettehealthcouncil.org/funding-opportunities/grants/>) for additional information, including:
  - Frequently Asked Questions (FAQs)
  - Scoring Tools
  - *Understanding Outcomes & Outputs* guide
- Contact Molly if you need help!

Grant application is available in many different languages!

# Outcomes & Outputs

- WHC uses **Outcomes & Outputs** to track the impact of our community investments.
- When applying for a grant with the WHC, projects must include:
  - At least two outcomes;
  - A set of supporting outputs; and
  - An overview of how progress in achieving the outcomes and associated outputs will be tracked.
- ***What is an Outcome?*** An outcome is the impact that a project makes because of its activities or outputs. Outcomes are qualitative data (not represented by numbers). You should track and report on outcomes during a grant period.
- ***What are Outputs?*** An output is the activity that you do to get a desired outcome. Outputs are quantitative data (represented by numbers). You should track and report on outputs during a grant period. Outputs should include specific dates and numbers.

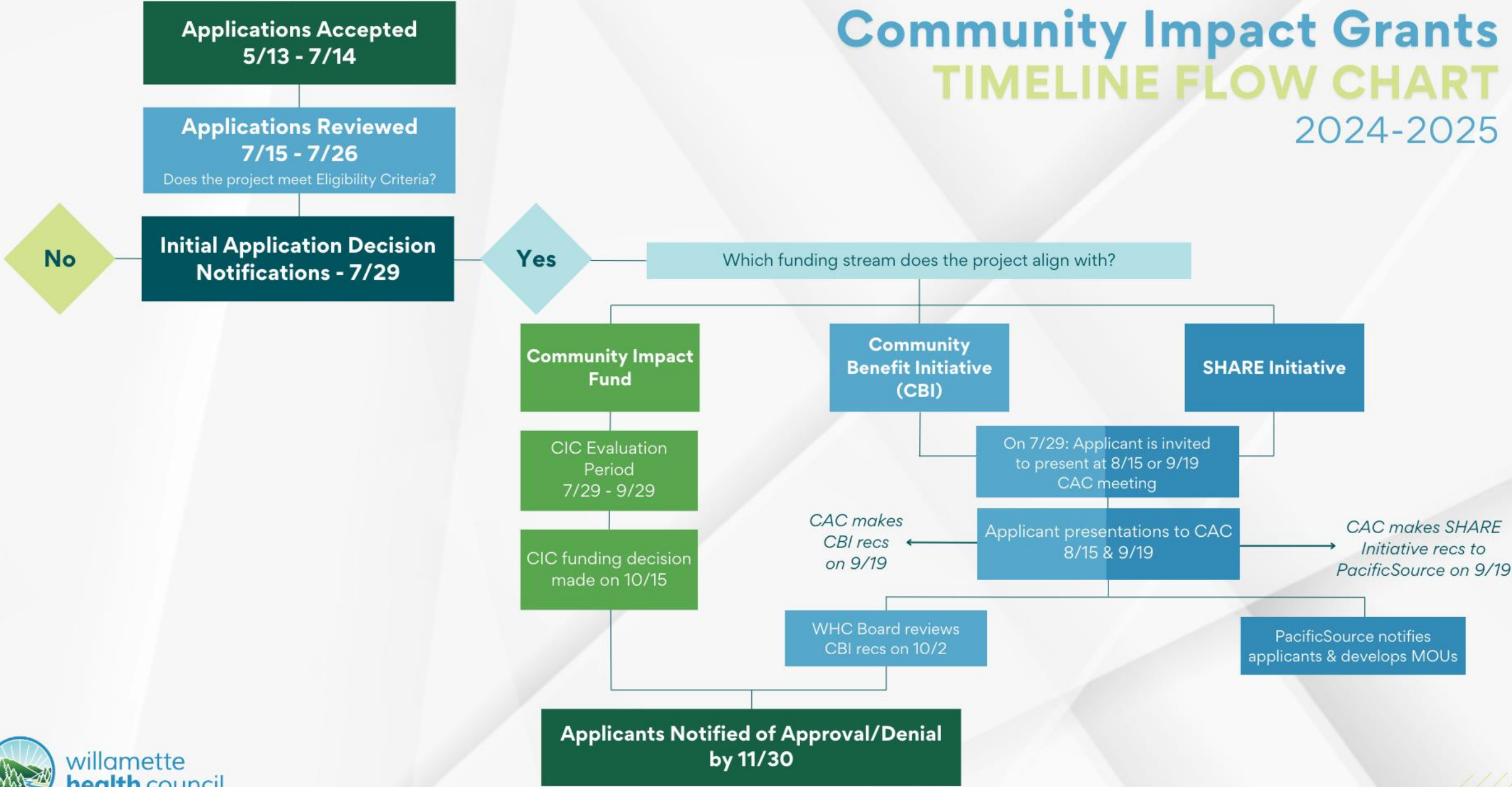
# What to Expect After Submitting your Application

- Projects that the WHC determines are eligible for the **Community Impact Fund** will be **reviewed and evaluated by the CIC**.
  - The CIC Scoring Tool will be uploaded to the WHC website by May 13<sup>th</sup> when the grant application goes live.
- Projects that the WHC and PacificSource determine are eligible for the **Community Benefit Initiative** and/or **SHARE Initiative** will be invited to **present to the CAC**.
  - **Presentation save the dates:** August 15<sup>th</sup> and September 19<sup>th</sup>, 1:00-3:00pm
  - Presentation guidelines will be shared ahead of time.
  - The CAC Scoring Tool will be uploaded to the WHC website by May 13<sup>th</sup> when the grant application goes live.

# Community Impact Grants

## TIMELINE FLOW CHART

2024-2025



# What to Expect if you are Awarded a Grant

**All applicants will be notified of final award status by the end of November.**

- Projects funded by **Community Benefit Initiative** and **Community Impact Fund** are managed by the WHC:
  - Letter of agreement
  - Biannual progress reports (due July 31, 2025, and January 31, 2026)
  - All grantee convening in July 2025
  - Fall 2025 site visits
  - Progress updates to the WHC Board, CAC, and CIC
- Projects funded by **SHARE Initiative** are managed by PacificSource:
  - Memorandum of Understanding
  - Progress updates to the CAC (including all grantee convening in July 2025)
  - Mid-cycle check-in and outcome reporting

# Q&A

**Thank you for joining us!  
What questions do you have?**

**Follow WHC on social media!**

**Instagram: [@willamettehealthcouncil](https://www.instagram.com/willamettehealthcouncil)**

**LinkedIn: [Willamette Health Council](https://www.linkedin.com/company/willamette-health-council)**